



CLASS A

Advantages

1. Electronic control unit controls the combustion by modulating the fan speed. Optional control of circulation pumps for central heating and domestic hot water (DHW).
2. Air feed fan optimizes the combustion and the fuel consumption rate.
3. The water mantle embraces the combustion chamber in full to utilize the emitted heat most efficiently.
4. Combustion chamber with large heat exchanging surface and low chamber resistance.
5. Large firebox door ensures easy loading even with bigger logs (length of logs up to 50 cm).
6. Ribbed chamber surface and three-pass flue gas flow for improved heat exchange.
7. Exchangeable metallic ash grate protects the pipe grid from the flame.
8. Burner flange on lower door for fitting pellet, oil or gas burners (optional).

SUNSYSTEM NWB PRIME solid fuel boiler – steel boiler with intelligent electronic control and fan for forced air circulation.

It is designed for solid fuel – sunflower eco-briquettes and can be fitted with a pellet, gas or oil burner.

Tested and approved in accordance with EN 303-5:2012.

Elements ensuring safety

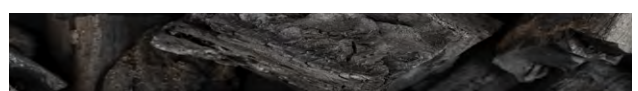
1. Safety valve 3 bar.
2. Safety heat exchanger - in case of overheating, cold water flows through it, lowering the temperature of the boiler.
3. Thermostatic regulator - switches off the fan and stops the combustion process.

Recommended fuel:

wood, humidity 20%

wood briquettes

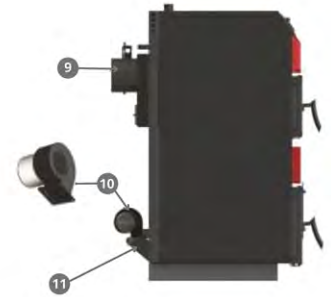
wood + coal



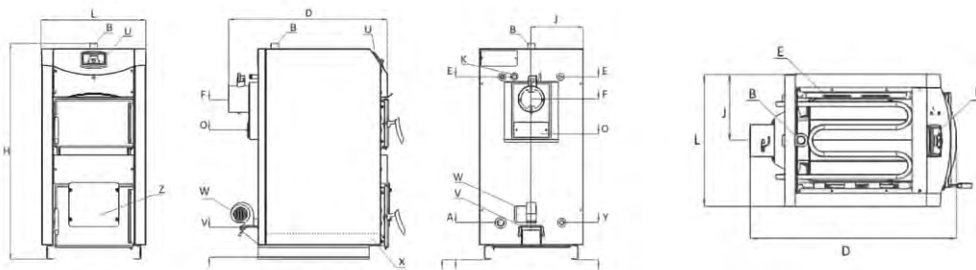


Available sizes, kW:

25	30	40	50	70	90	110
----	----	----	----	----	----	-----



- 1. Electronic control
- 2. Cladding
- 3. Highly efficient insulation
- 4. Three-pass flue gas path
- 5. Water jacket
- 6. Combustion chamber
- 7. Ash and soot container
- 8. Burner flange (optional)
- 9. Chimney
- 10. Blower fan
- 11. Inlet air damper



Technical specifications

		NWB PRIME 25	NWB PRIME 30	NWB PRIME 40	NWB PRIME 50	NWB PRIME 70	NWB PRIME 90	NWB PRIME 110
Rated power	kW	25	30	40	50	70	90	110
Height (H)	mm	1330	1330	1330	1330	1470	1470	1470
Width (L) x Depth (D)	mm	570x1050	630x1050	730x1050	730x1100	730x1225	790x1225	850x1225
Weight	kg	260	282	318	342	368	391	432
Water jacket volume	L	75	82	96	106	134	145	162
Combustion chamber volume	L	62	73	84	97	120	133	160
Connecting to a chimney	mm	ø150	ø150	ø180	ø180	ø200	ø200	ø200
Required chimney draft	Pa/mbar	20/0.20	21/0.21	23/0.23	24/0.24	38/0.38	47/0.47	56/0.56