

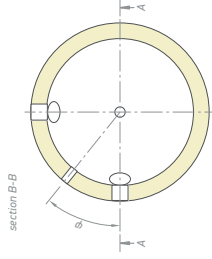
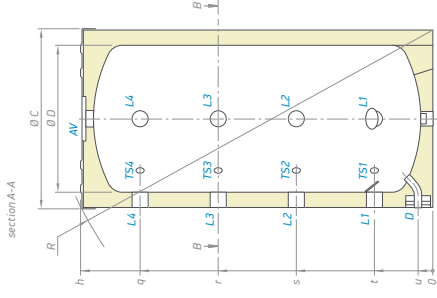
**200 L
tot
500 L**

zonder warmtewisselaars

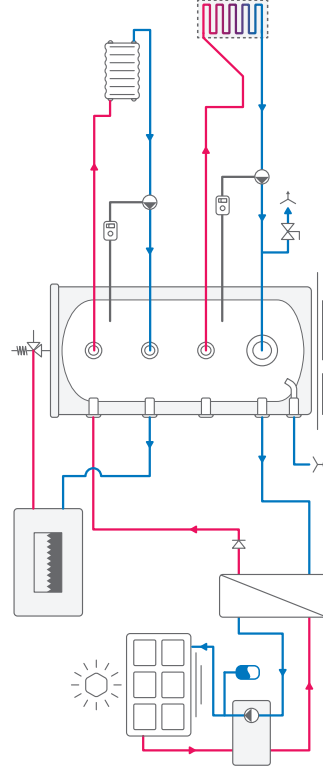
MODEL	TESYV 200 60 P4	TESYV 300 65 P4	TESYV 400 75 P4	TESYV 500 75 P4
TS1	G1/2	G1/2	G1/2	G1/2
TS2	G1/2	G1/2	G1/2	G1/2
TS3	G1/2	G1/2	G1/2	G1/2
TS4	G1/2	G1/2	G1/2	G1/2
AV	G1 1/2	G1 1/2	G1 1/2	G1 1/2
D	G3/4	G3/4	G3/4	G3/4
L1	G1 1/2	G1 1/2	G1 1/2	G1 1/2
L2	G1 1/2	G1 1/2	G1 1/2	G1 1/2
L3	G1 1/2	G1 1/2	G1 1/2	G1 1/2
L4	G1 1/2	G1 1/2	G1 1/2	G1 1/2

Schroefdraadmatelingen volgens EN ISO 228-1/

Almetingen +5mm	TESYV 200 60 P4	TESYV 300 65 P4	TESYV 400 75 P4	TESYV 500 75 P4	
h	mm	1202	1422	1407	1677
q	mm	995	1207	1166	1448
r	mm	730	872	850	1036
s	mm	465	537	534	624
t	mm	200	202	218	212
u	mm	75	52	75	75
ϕ	°	45	45	22.5	22.5
R	mm	1345	1565	1596	1837
ØC	mm	600	650	650	750
ØD	mm	500	550	650	650



VOORBEELD VAN INSTALLATIE EN AANSLUITING



MODEL	TESYV 200 60 P4	TESYV 300 65 P4	TESYV 400 75 P4	TESYV 500 75 P4
Artikelnummer	300632	300634	300635	300636
Capaciteit	L 202	294	406	497
Nettogewicht	kg 47	55	68	81,2
Isolatie	mm 50	50	50	50
Warmteverliezen ΔT45K	W 59	68	91	95
Energie-efficiëntieklasse	B	B	C	C
Maximale bedrijfstemperatuur	°C 95	95	95	95
Nominale druk	bar 3	3	3	3